



INSTALLATION INSTRUCTION

RECREATION SPORT FLOORING

These instructions are specifically written for the installation of the following products:

Product	Width	Thickness	Installation direction	Seams welded
Recreation 30	Approximately 6' 6"	3 mm	Same	CR 40
Recreation 45	Approximately 4' 11"	4.5 mm	Same	CR 50
Recreation 60	Approximately 4' 11"	6 mm	Same	CR 50
Recreation 85	Approximately 4' 11"	8.5 mm	Same	CR 50

Important Note: Before installing, refer to 2023 Gerflor USA Installation Handbook for acclimation, job site conditions, subfloor prep, and other general installation recommendations.

1. GENERAL INFORMATION

- 1.1. Gerflor flooring products are formulated to withstand high moisture conditions. To perform as designed, the concrete should be properly prepared to create a contaminate free and porous substrate.
- 1.2. Gerflor flooring products are not designed to withstand hydrostatic or osmotic pressure.
- 1.3. *The guidelines offered within this document are not intended to be all inclusive. Only qualified, professional flooring technicians experienced in the field of resilient flooring should proceed with this installation system.*
- 1.4. It is recommended to mechanically prepare the concrete via grinding or bead blasting the surface to achieve a CSP 1+, clean and porous substrate.
- 1.5. Moisture and pH testing must be performed in accordance with ASTM F710-17.
- 1.6. Adhesive bond tests are recommended to ensure adequate bonding to the substrate.
- 1.7. **Do not install material that has visible defects or damage. A contractor that installs material that has visible defects or damage assumes responsibility for that material.**

2. LAYOUT AND INSTALLATION

NOTE: Recreation is recommended to be installed with *random* match side seams. Due to slight stretching from being rolled, we do not guarantee a perfect side pattern match, or end match if attempted.

- 2.1. For areas where bleachers will be used, please refer to the **Gerflor BleacherBlok Installation Instruction**.
- 2.2. Mark the center starting line.
- 2.3. Follow roll sequence numbers.
- 2.4. Unroll the first length of material along this chalk line and then work progressively outward, leaving a 1/4" gap between the sheets and allow the material to relax for a minimum of 16 hours.
- 2.5. Seaming should be kept to a minimum and avoid cross seams as much as possible. Place seams in areas exposed to the least amount of traffic.

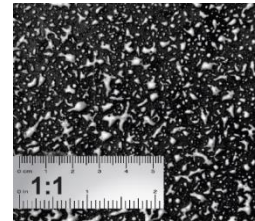
INSTALLATION INSTRUCTION

RECREATION SPORT FLOORING

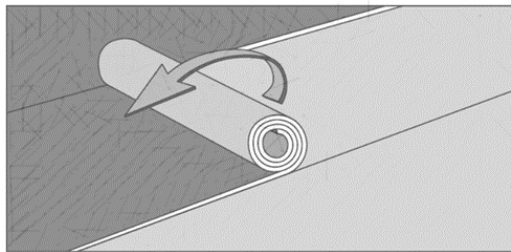
- 2.6. For proper welding, reposition sheets to a gap no greater than a $\frac{1}{32}$ " gap between them. **Wider gaps will compromise the integrity of the weld.**
- 2.7. In most cases, factory edges can be used for side seams. Sheets that may have minor edge damage or distortion must be trimmed and removed prior to installation of the sheets.
- 2.8. Leave material 4"-6" longer on each end for trimming after placement. *Do not net cut material to the final trim until being placed into the adhesive.*
- 2.9. Before applying the adhesive, ensure gap between the sheets is uniform and no greater than $\frac{1}{32}$ " along the entire length. Overlap edges and trace cut if necessary, to achieve consistent seam gap. This gap will act as a guide for the groover when preparing to heat weld.

3. INSTALLING USING GERFIX SPRAY ADHESIVE

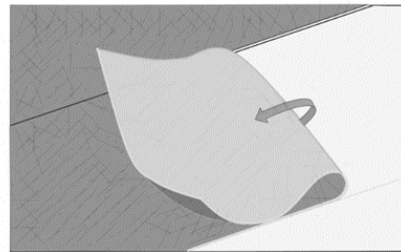
- 3.1. Always refer to the **Gerfix Spray Adhesive Technical Data Sheet**
- 3.2. Recommended spray pattern: (150 to 185 sq. ft. per can)
- 3.3. Ensure substrate, flooring, and surrounding areas are clean and dust free.
- 3.4. Wipe your hand across surface to verify for dust.
- 3.5. If dust transfers, the substrate is not clean.
- 3.6. Damp-mop substrate if dust is present.
- 3.7. Protect from overspray with a spray shield, drop cloths, paper, or masking.
- 3.8. Starting from the center line and working outward, the sheets (width) halfway and apply the adhesive to the subfloor.
- 3.9. Never pre-cut material to final trim until it is placed into the adhesive. Leave material 2"-3" longer for trimming after placement into the adhesive.



Roll back method



Fold back method



- 3.10. Shake aerosol can well. Remove white cap
- 3.11. To ensure uniform adhesion of the entire surface, spray a workable amount of adhesive at one time.
- 3.12. Stand straight up to spray. Hold can upside down, approximately 20-30 inches horizontally from the substrate, aim at floor and press tip with finger.
- 3.13. Walk right to left smoothly to achieve results as seen on photo.



INSTALLATION INSTRUCTION RECREATION SPORT FLOORING

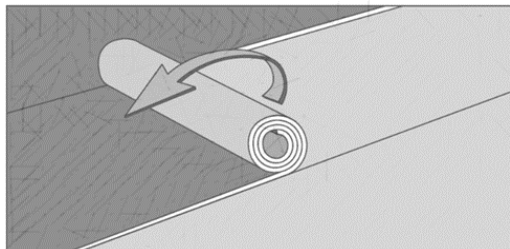
- 3.14. Adhesive should spray out in a wide mist and fall like snow.
- 3.15. Spraying in a sweeping motion may result in an inconsistent spray pattern.
- 3.16. Excess buildup or inconsistent spray pattern on substrate may telegraph through the flooring.
- 3.17. Avoid excessive application of adhesive.
- 3.18. To ensure optimal spray pattern, remove any adhesive build up that may occur during the application process.
- 3.19. If overspray occurs, it may be removed with a damp cloth while the adhesive is still wet.
- 3.20. Once the adhesive is dry to the touch, immediately install the flooring. While open, ensure that adhesive is not contaminated by dust
- 3.21. Roll flooring with a 3 section 100-lbs roller within 1 hour after installation to complete the bonding process.
- 3.22. Always roll seams, at the walls, and under toe kicks with a hand roller to ensure 100% transfer of adhesive.
- 3.23. Flooring may be heat-welded 1 hour after installation.
- 3.24. Continue laying sheets by keeping the edges spaced no greater than 1/32", trimming each side with a straight edge or scribing when needed. The goal is to produce a uniform 1/32" spaced seam for welding.
- 3.25. The width of the gap should be even and may be less than 1/32" depending on the guide of the groover to be used.
- 3.26. During the installation, always double check the flooring for bubbles with the lights on and off.
- 3.27. **Floor is open to all traffic immediately after installation.**



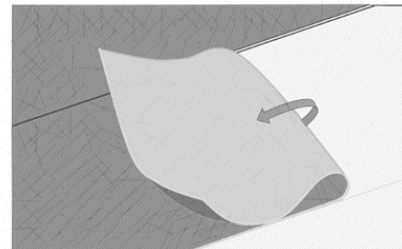
4. INSTALLING USING GERFIX TPS+ ACRYLIC ADHESIVE

- 4.1. Always refer to the **Gerfix TPS+ Adhesive Technical data Sheet**
- 4.2. Recommended trowel size is 1/32" x 1/16" x 1/32", covering from 170 to 220 sq. ft. per US gallon.
- 4.3. Starting from the center line and working outward, fold back or roll back the sheets (width) halfway and apply the adhesive to the subfloor.

Roll back method



Fold back method





INSTALLATION INSTRUCTION

RECREATION SPORT FLOORING

- 4.4. Never pre-cut material to final trim until it is placed into the adhesive. Leave material 2"-3" longer for trimming after placement.
- 4.5. To ensure uniform adhesion of the entire surface, apply a workable amount of adhesive at one time.
- 4.6. Maintain a uniform spread rate. Replace trowel (or trowel blade) with every pail used.
- 4.7. Immediately after troweling the adhesive onto the substrate use a medium napped paint roller saturated with adhesive to flatten out visible trowel marks and even out the adhesive. **A double arm roller frame is recommended to ensure an even coat of adhesive.**
- 4.8. Once the adhesive is applied, fold back or roll back the flooring into the still wet adhesive for 4"-6". This will ease the fold-back or roll back of the second half and it will help avoid an overlap of the glue-line. **Should this method not be followed, the glue-line mark may telegraph through the flooring.**
- 4.9. "Open time" of the adhesive is dependent upon porosity of the substrate, temperature, and humidity. It is important that the installers familiarize themselves with the adhesive before starting the installations.

<i>Application Characteristics over Porous Substrates (Non-Porous-see note below)</i>		
	<i>Open Time*</i>	<i>Working Time**</i>
Gerflor Homogeneous & Heterogeneous Floorings	20 to 40 minutes (to reach a tacky state***)	Up to 1.5 hours

* **Open Time:** is the waiting time required before installing flooring into the adhesive..

** **Working time:** is the window of time for the adhesive to accept flooring.

*** **Tacky:** When adhesive starts to becomes translucent and there is light transfer to the fingers when slightly touched

Note: For ***Non-Porous*** substrates such as metal or existing flooring, let the adhesive dry completely, with no transfer to the fingers when touched, then immediately install the flooring, and roll with a 100lb. roller.

- 4.10. When installing, always work to have complete sheets glued at the end of the day.
- 4.11. To reduce the risk of bubbles, the roll back method is the most recommended method of installation.
- 4.12. By keeping the roll tight and maintaining constant pressure while unrolling into the adhesive, the risk for bubbles will be minimal.
- 4.13. The fold back method is acceptable, but care must be taken to not unfold it back too quickly.
- 4.14. Periodically, lift the edge of a sheet to confirm transfer of adhesive to the back of the flooring. There must be adhesive transfer for the flooring to be adequately secured to the substrate.
- 4.15. Once flooring is placed into the adhesive, immediately roll thoroughly with a 3 section 100-lbs roller in both directions.
- 4.16. Always roll seams, at the walls, and under toe kicks with a hand roller to ensure 100% transfer of adhesive.
- 4.17. Continue laying sheets by keeping the edges spaced no greater than 1/32", trimming each side with a straight edge or scribing when needed. The goal is to produce a uniform 1/32" spaced seam for welding.

INSTALLATION INSTRUCTION

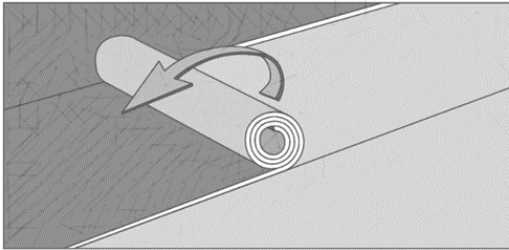
RECREATION SPORT FLOORING

- 4.18. The width of the gap has to be even and may be less than 1/32" depending on the guide of the groover used.
- 4.19. During the installation, with the lights on and off, always double check the flooring for bubbles with portable, ambient, and/or fixed lighting.
- 4.20. **Avoid adhesive displacement by prohibiting traffic for a period of 24 hours and 72 hours for rolling loads.**

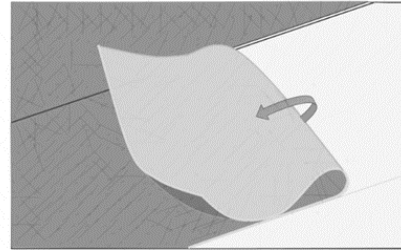
5. INSTALLING USING GERFIX 100 ADHESIVE

- 5.1. Always refer to the **Gerfix 100 Adhesive Technical Data Sheet**.
- 5.2. Follow the guidelines indicated on the Technical Data Sheet.
- 5.3. Recommended trowel size is 1/32" x 1/16" x 1/32", covering from 170 to 220 sq. ft. per US gallon.
- 5.4. Starting from the center line and working outward, fold back or roll back the sheets (width) halfway and apply the adhesive to the subfloor.

Roll back method



Fold back method



- 5.5. To ensure uniform adhesion of the entire surface, apply a workable amount of adhesive at one time.
- 5.6. Maintain a uniform spread rate. Replace trowel (or trowel blade) with every pail used.

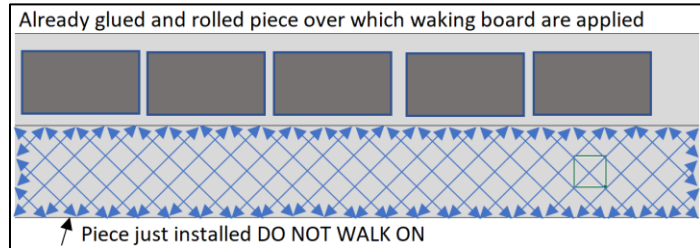
<i>Application Characteristics over Porous Substrates "ONLY"</i>		
	<i>Open Time*</i>	<i>Working Time**</i>
Gerflor Recreation Products	No Open Time	Up to 45 minutes

* **Open Time:** is the wait time required before installing flooring into the adhesive.

** **Working time:** is the "window" of time for the adhesive to accept flooring

- 5.7. Maintain a uniform spread rate. Replace trowel (or trowel blade) with every pail used.
- 5.8. When installing, always work to have complete sheets glued at the end of the day.
- 5.9. To reduce the risk of bubbles, the roll back method is the most recommended method of installation.
- 5.10. By keeping the roll tight and maintaining constant pressure while unrolling into the adhesive, the risk for bubbles will be minimal.
- 5.11. The fold back method is acceptable, but care must be taken to not unfold it back too quickly.
- 5.12. Periodically, lift the edge of the sheet to confirm 100% transfer of adhesive to the back of the flooring.

- 5.13. Once flooring is placed into the adhesive, immediately roll thoroughly with a 3 section 100-lbs steel roller in both directions.
- 5.14. The **use of kneeling boards is mandatory** when working on top of freshly installed flooring
- 5.15. Always roll seams, at the walls, and under toe kicks with a hand roller to **ensure 100% transfer of adhesive.**
- 5.16. **It may be necessary to weight down end seams, and/or wall cuts until the adhesive has cured. The use of clean, flat materials is recommended.**
- 5.17. Care must be taken to avoid flopping the sheets into the adhesive as this may cause air to become entrapped
- 5.18. Keep on installing sheets by keeping the edges spaced no greater than 1/32", trimming each side with a straight edge or scribing. The goal is to produce a uniform 1/32" spaced seam for welding.
- 5.19. Using a 100-lbs sectional steel roller, roll the flooring in the width first and then the length to ensure adhesive transfer and to evacuate all air that can lead to bubbles. Optimally there should be an individual tasked solely with this responsibility
- 5.20. Continually check the flooring for bubbles. To verify there are no bubbles, look down and across the flooring from both a standing and prone position with the lights on and off. The use of a light source at floor level can be helpful in finding any air pockets or bubbles.
- 5.21. Use mineral spirits to remove fresh adhesive from the surface of the flooring
- 5.22. Heat welding can proceed after 6 hours from time of installation
- 5.23. **Avoid adhesive displacement by prohibiting traffic for a period of 6 hours for light traffic, and 8 hours for heavy static & dynamic loads**
- 5.24. Following the above steps is of the utmost importance for a successful installation that will resist high moisture levels and be serviceable over the life of the floor.



6. HEAT WELDING - REFER TO "HEAT WELDING GERFLOR VINYL PRODUCTS" INSTRUCTIONS

7. GAME LINE PAINTING – REFER TO "GAME LINE PAINTING" INSTRUCTIONS

8. BLEACHERBLOK – REFER TO "SV BLEACHERBLOK" INSTRUCTIONS

9. ONCE THE INSTALLATION IS COMPLETED

- 9.1. Perform a visual inspection of the project.
- 9.2. Verify every welded seam.
- 9.3. Repair every imperfection before leaving the project.
- 9.4. Make sure that every vertical obstacle such as doorframes are well trimmed and sealed with an acrylic, silicone, or equivalent sealant product.
- 9.5. To maximize the aesthetic appearance and serviceability of the newly installed flooring, provide your customer with a copy of the **Gerflor USA Maintenance Instructions.**